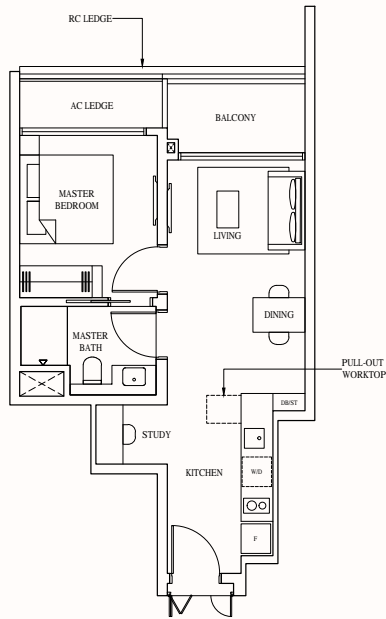


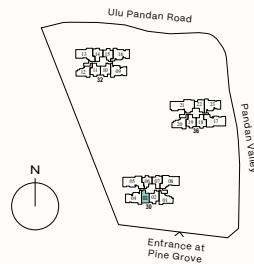
1-BEDROOM + STUDY

TYPE 1BS

50 sqm (538 sqft)
#03-03 to #24-03



Areas include AC ledge and balcony, where applicable. All RC ledges are excluded from strata area and non-load bearing. The plans are subjected to change as may be required by relevant authorities. All areas and measurements stated herein as approximate and subject to final survey.



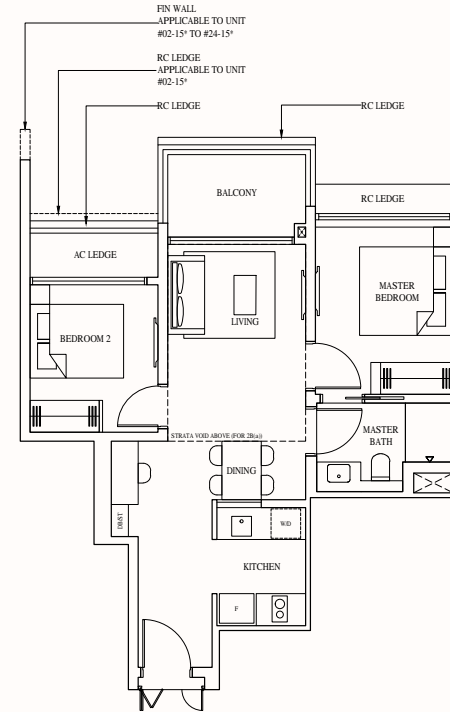
2-BEDROOM

TYPE 2B & 2B(a)

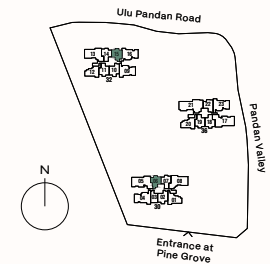
TYPE 2B
65 sqm (700 sqft)
#03-06 to #23-06
#02-15* to #23-15*

TYPE 2B(a)
79 sqm (850 sqft)
Inclusive of strata void of 14 sqm (151 sqft) above living and dining

#24-06
#24-15*
*Mirrored unit

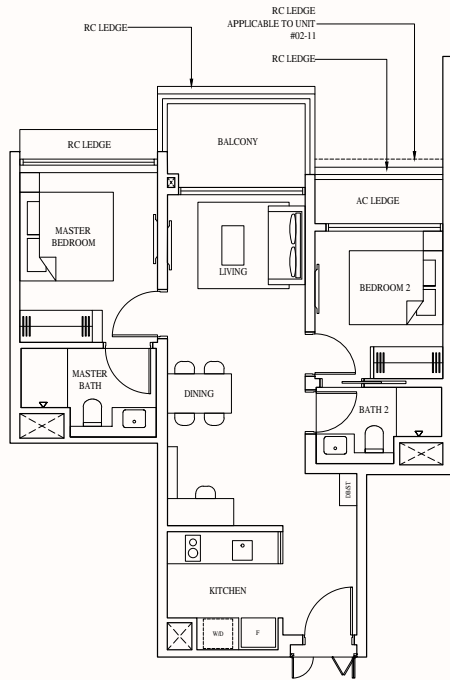


Areas include AC ledge and balcony, where applicable. All RC ledges are excluded from strata area and non-load bearing. The plans are subjected to change as may be required by relevant authorities. All areas and measurements stated herein as approximate and subject to final survey.

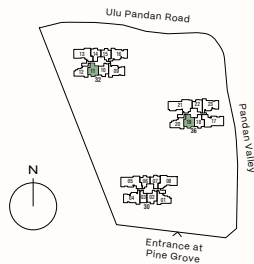


2-BEDROOM PREMIUM
TYPE 2BP1

71 sqm (764 sqft)
#02-11 to #24-11
#02-19 to #24-19

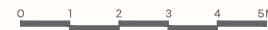
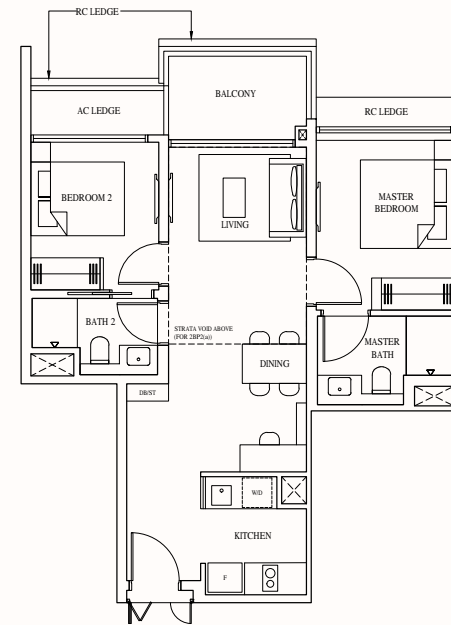


Areas include AC ledge and balcony, where applicable. All RC ledges are excluded from strata area and non-load bearing. The plans are subjected to change as may be required by relevant authorities. All areas and measurements stated herein as approximate and subject to final survey.

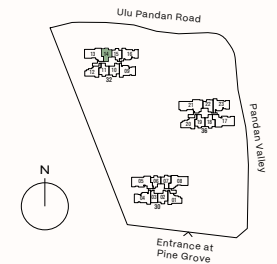


2-BEDROOM PREMIUM
TYPE 2BP2 & 2BP2(a)

TYPE 2BP2
71 sqm (764 sqft)
#02-14 to #23-14
TYPE 2BP2(a)
85 sqm (915 sqft)
Inclusive of strata void of
14 sqm (151 sqft) above
living and dining
#24-14



Areas include AC ledge and balcony, where applicable. All RC ledges are excluded from strata area and non-load bearing. The plans are subjected to change as may be required by relevant authorities. All areas and measurements stated herein as approximate and subject to final survey.



2-BEDROOM PREMIUM

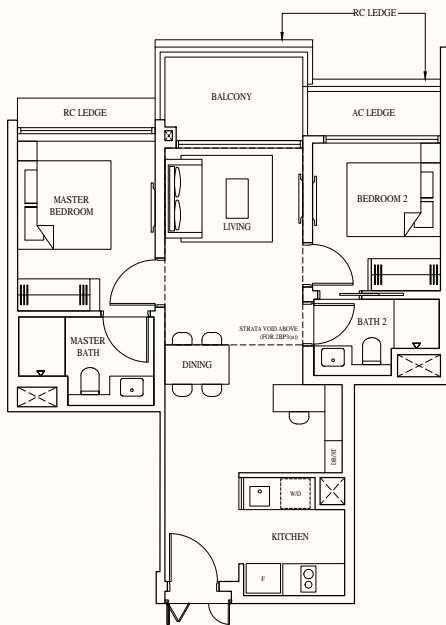
TYPE 2BP3 & 2BP3(a)

TYPE 2BP3
71 sqm (764 sqft)

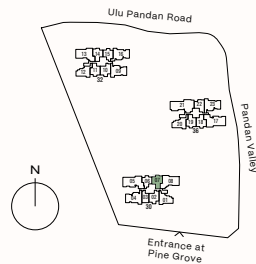
#03-07 to #23-07

TYPE 2BP3(a)
85 sqm (915 sqft)
Inclusive of strata void of
14 sqm (151 sqft) above
living and dining

#24-07



Areas include AC ledge and balcony, where applicable. All RC ledges are excluded from strata area and non-load bearing. The plans are subjected to change as may be required by relevant authorities. All areas and measurements stated herein as approximate and subject to final survey.

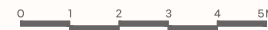
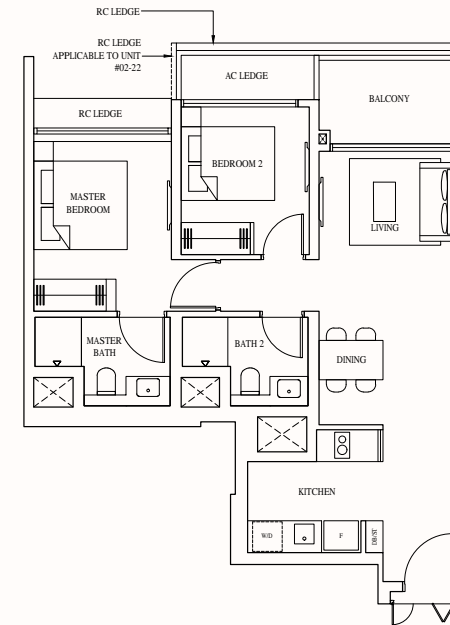


2-BEDROOM PREMIUM

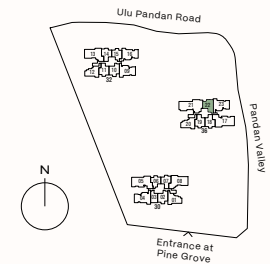
TYPE 2BP4

72 sqm (775 sqft)

#02-22 to #23-22



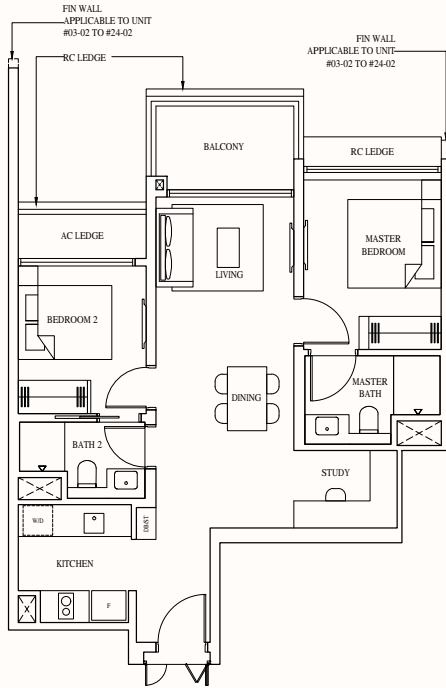
Areas include AC ledge and balcony, where applicable. All RC ledges are excluded from strata area and non-load bearing. The plans are subjected to change as may be required by relevant authorities. All areas and measurements stated herein as approximate and subject to final survey.



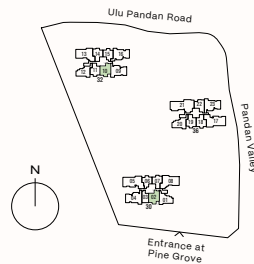
2-BEDROOM PREMIUM + STUDY

TYPE 2BPS1

74 sqm (797 sqft)
 #03-02 to #24-02
 #02-10 to #24-10



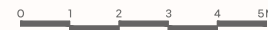
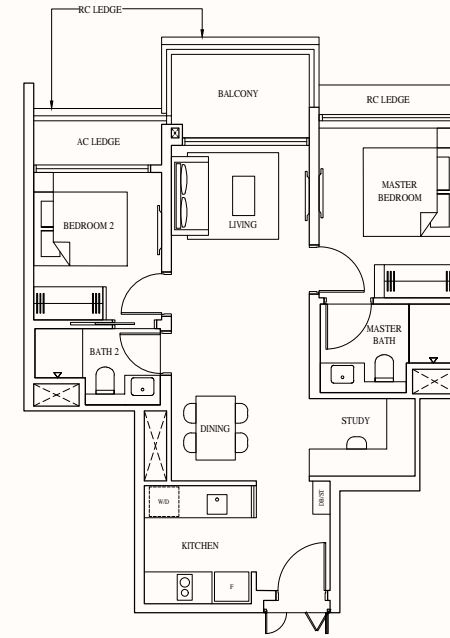
Areas include AC ledge and balcony, where applicable. All RC ledges are excluded from strata area and non-load bearing. The plans are subjected to change as may be required by relevant authorities. All areas and measurements stated herein as approximate and subject to final survey.



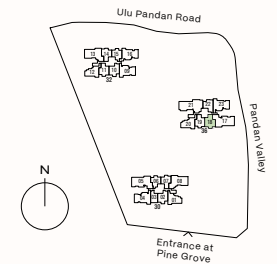
2-BEDROOM PREMIUM + STUDY

TYPE 2BPS2

74 sqm (797 sqft)
 #02-18 to #24-18



Areas include AC ledge and balcony, where applicable. All RC ledges are excluded from strata area and non-load bearing. The plans are subjected to change as may be required by relevant authorities. All areas and measurements stated herein as approximate and subject to final survey.



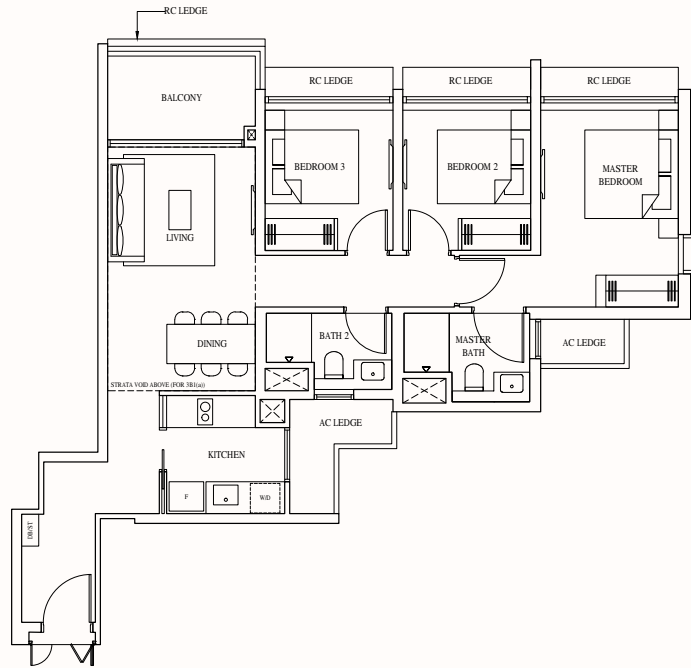
3-BEDROOM

TYPE 3B1 & 3B1(a)

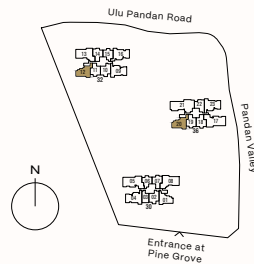
TYPE 3B1
90 sqm (969 sqft)
#02-12 to #23-12
#02-20 to #23-20

TYPE 3B1(a)
108 sqm (1163 sqft)
Inclusive of strata void of
18 sqm (194 sqft) above
living and dining

#24-12
#24-20



Areas include AC ledge and balcony, where applicable. All RC ledges are excluded from strata area and non-load bearing. The plans are subjected to change as may be required by relevant authorities. All areas and measurements stated herein as approximate and subject to final survey.



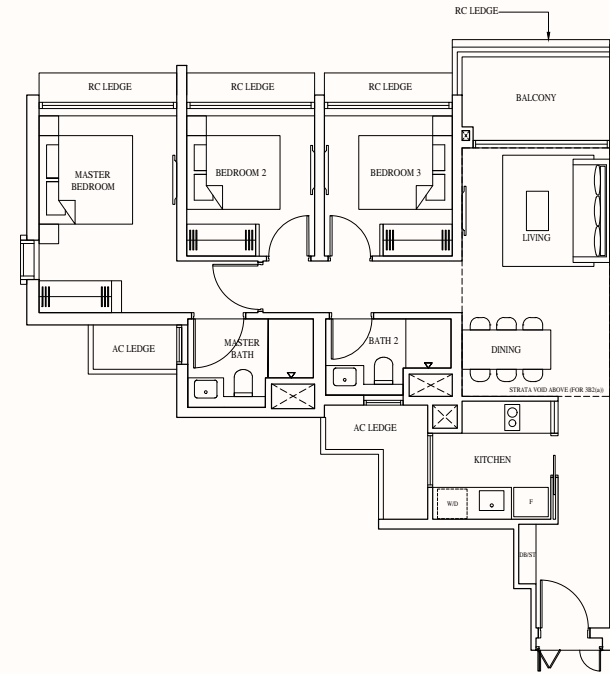
3-BEDROOM

TYPE 3B2 & 3B2(a)

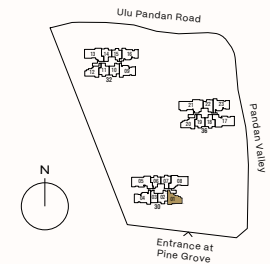
TYPE 3B2
90 sqm (969 sqft)
#03-01 to #23-01

TYPE 3B2(a)
109 sqm (1173 sqft)
Inclusive of strata void of
19 sqm (205 sqft) above
living and dining

#24-01



Areas include AC ledge and balcony, where applicable. All RC ledges are excluded from strata area and non-load bearing. The plans are subjected to change as may be required by relevant authorities. All areas and measurements stated herein as approximate and subject to final survey.



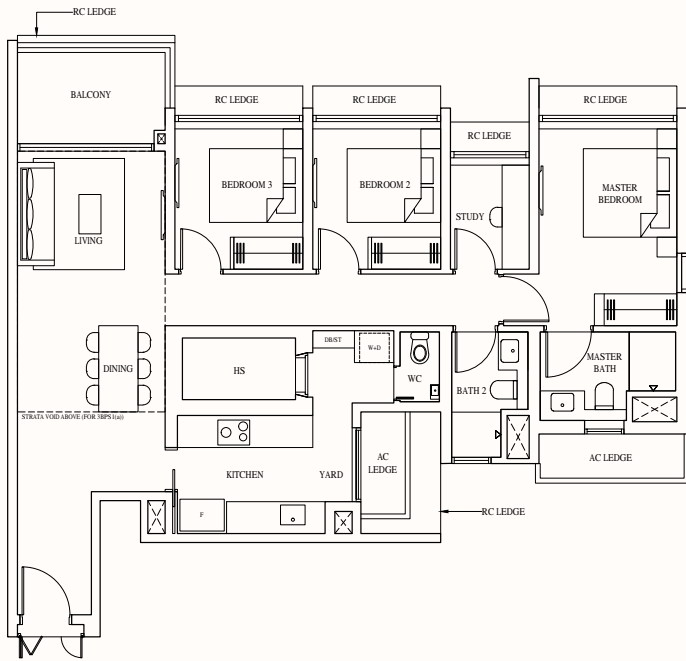
3-BEDROOM PREMIUM + STUDY

TYPE 3BPS1 & 3BPS1(a)

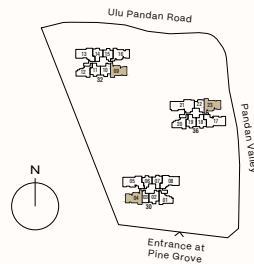
TYPE 3BPS1
113 sqm (1216 sqft)
#03-04 to #23-04
#02-09* to #23-09*
#02-23 to #23-23

TYPE 3BPS1(a)
132 sqm (1421 sqft)
Inclusive of strata void of 19 sqm (205 sqft) above living and dining

#24-04
#24-09*
#24-23
*Mirrored unit



Areas include AC ledge and balcony, where applicable. All RC ledges are excluded from strata area and non-load bearing. The plans are subjected to change as may be required by relevant authorities. All areas and measurements stated herein as approximate and subject to final survey.



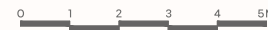
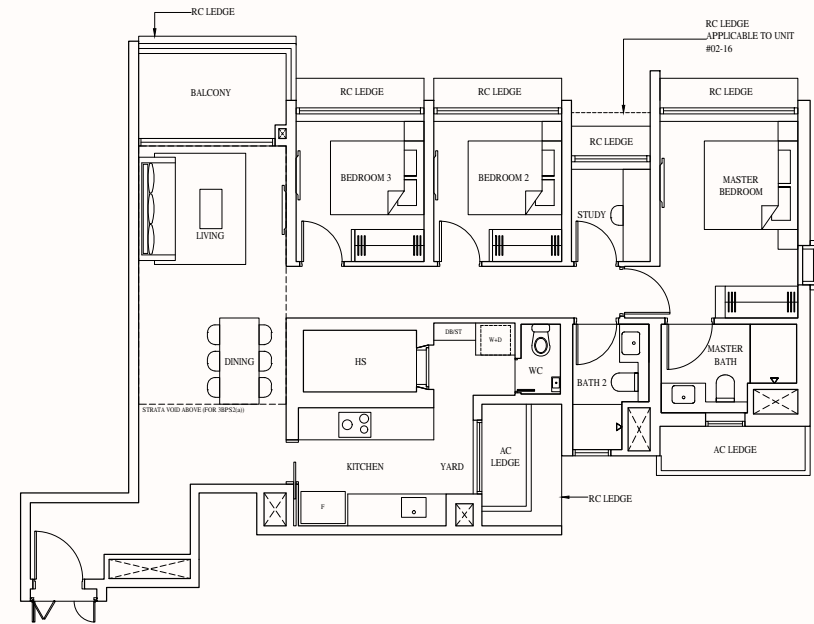
3-BEDROOM PREMIUM + STUDY

TYPE 3BPS2 & 3BPS2(a)

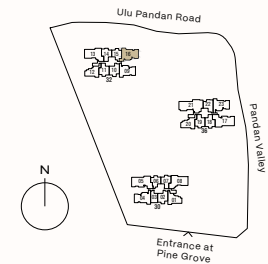
TYPE 3BPS2
113 sqm (1216 sqft)
#02-16 to #23-16

TYPE 3BPS2(a)
132 sqm (1421 sqft)
Inclusive of strata void of 19 sqm (205 sqft) above living and dining

#24-16



Areas include AC ledge and balcony, where applicable. All RC ledges are excluded from strata area and non-load bearing. The plans are subjected to change as may be required by relevant authorities. All areas and measurements stated herein as approximate and subject to final survey.





4-BEDROOM DELUXE (WITH PRIVATE LIFT)

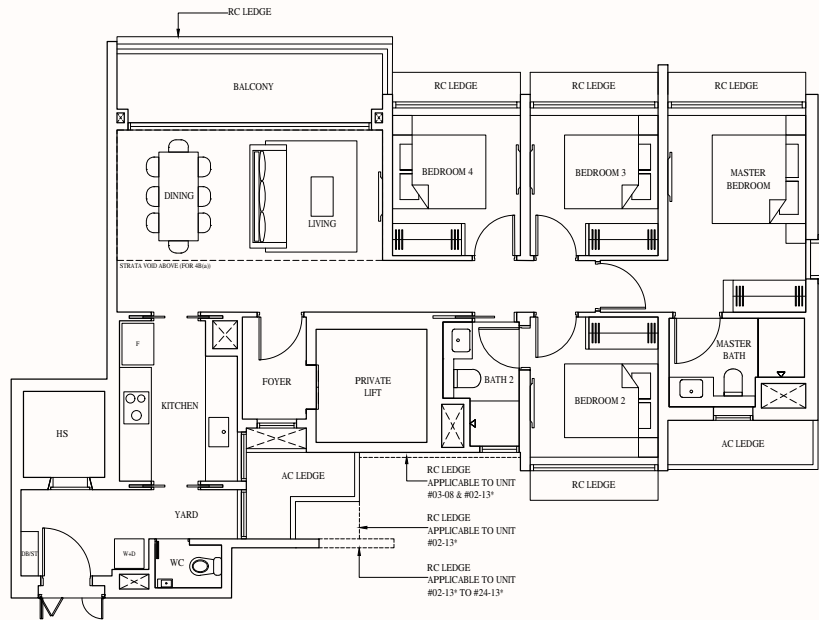
TYPE 4B & 4B(a)

TYPE 4B
120 sqm (1292 sqft)

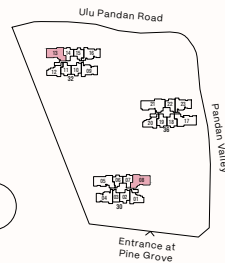
#03-08 to #23-08
#02-13* to #23-13*

TYPE 4B(a)
138 sqm (1485 sqft)
Inclusive of strata void of
18 sqm (194 sqft) above
living and dining

#24-08
#24-13*
*Mirrored unit



Areas include AC ledge and balcony, where applicable. All RC ledges are excluded from strata area and non-load bearing. The plans are subjected to change as may be required by relevant authorities. All areas and measurements stated herein as approximate and subject to final survey.



4-BEDROOM PREMIUM (WITH PRIVATE LIFT)

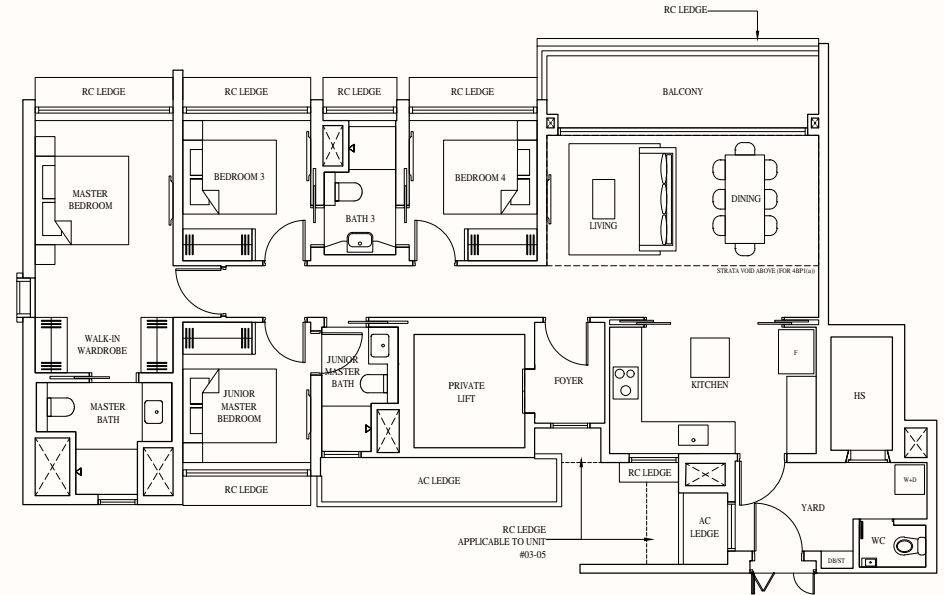
TYPE 4BP1 & 4BP1(a)

TYPE 4BP1
136 sqm (1464 sqft)

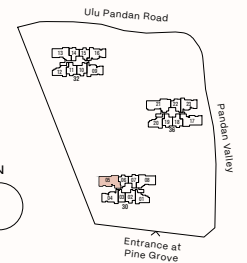
#03-05 to #23-05

TYPE 4BP1(a)
155 sqm (1668 sqft)
Inclusive of strata void of
19 sqm (205 sqft) above
living and dining

#24-05



Areas include AC ledge and balcony, where applicable. All RC ledges are excluded from strata area and non-load bearing. The plans are subjected to change as may be required by relevant authorities. All areas and measurements stated herein as approximate and subject to final survey.





4-BEDROOM PREMIUM (WITH PRIVATE LIFT)

TYPE 4BP2 & 4BP2(a)

TYPE 4BP2
136 sqm (1464 sqft)
#02-17 to #23-17

TYPE 4BP2(a)
155 sqm (1668 sqft)
Inclusive of strata void of
19 sqm (205 sqft) above
living and dining

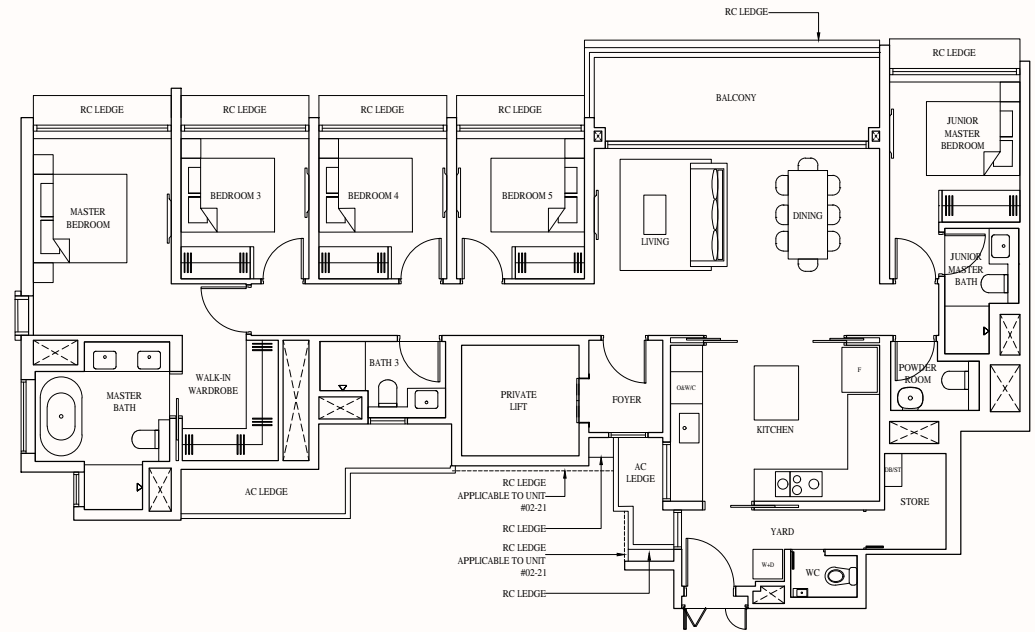
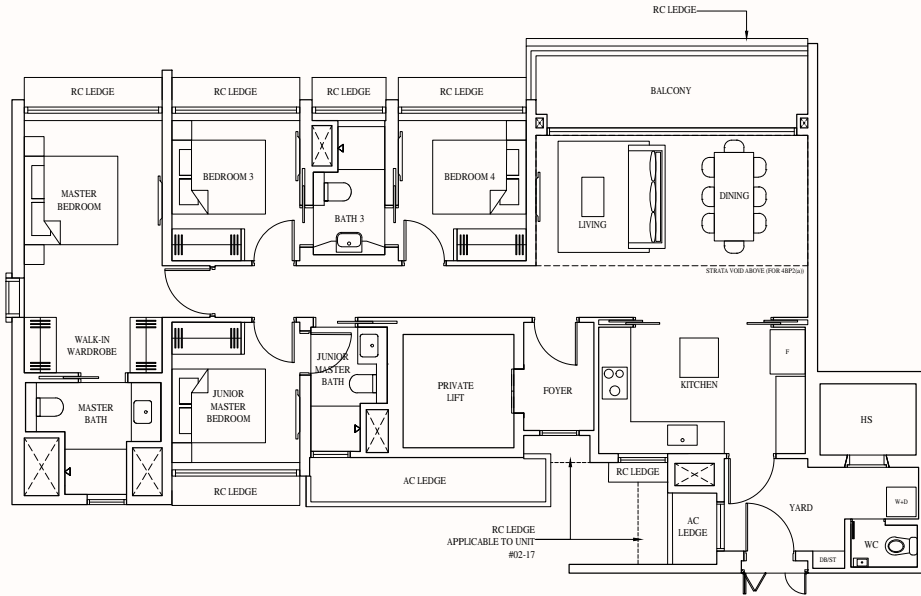
#24-17



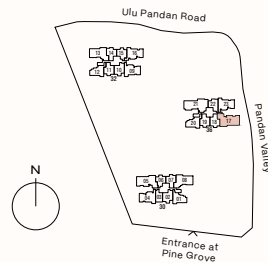
5-BEDROOM PREMIUM (WITH PRIVATE LIFT)

TYPE 5BP

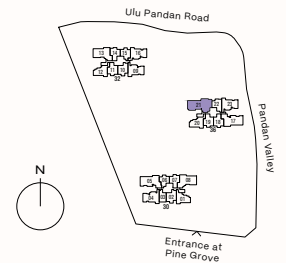
161 sqm (1733 sqft)
#02-21 to #23-21



Areas include AC ledge and balcony, where applicable. All RC ledges are excluded from strata area and non-load bearing. The plans are subjected to change as may be required by relevant authorities. All areas and measurements stated herein as approximate and subject to final survey.



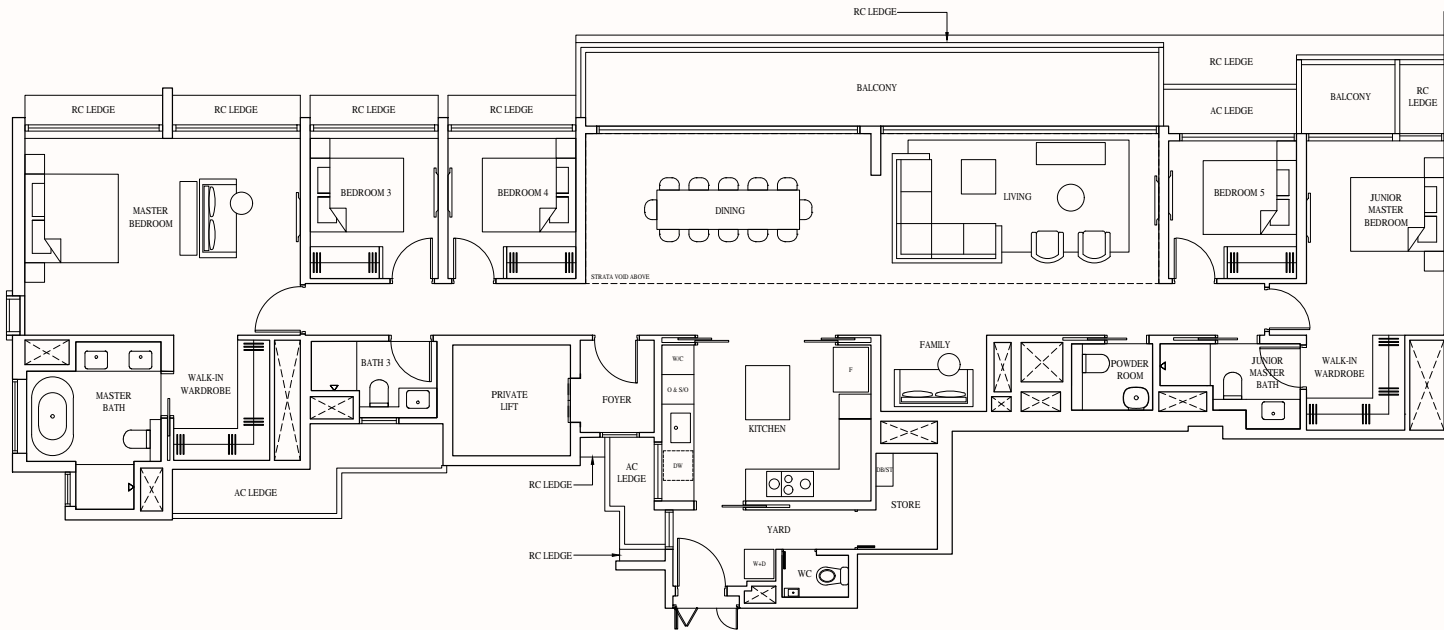
Areas include AC ledge and balcony, where applicable. All RC ledges are excluded from strata area and non-load bearing. The plans are subjected to change as may be required by relevant authorities. All areas and measurements stated herein as approximate and subject to final survey.



PENTHOUSE
TYPE PH

267 sqm (2874 sqft)
Inclusive of strata void of
43 sqm (463sqft) above
living and dining

#24-21



Areas include AC ledge and balcony, where applicable. All RC ledges are excluded from strata area and non-load bearing. The plans are subjected to change as may be required by relevant authorities. All areas and measurements stated herein as approximate and subject to final survey.

